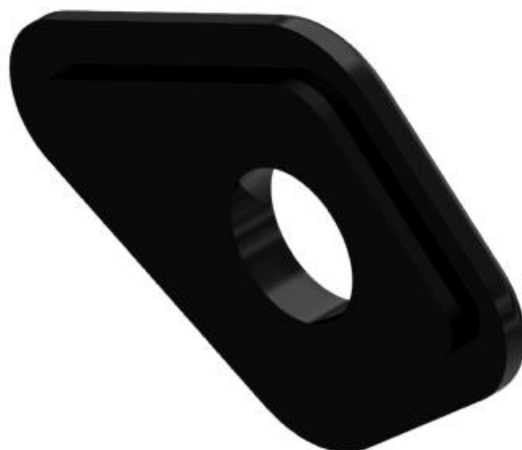




**FITTING INSTRUCTIONS FOR RAP0025 REAR INDICATOR ADAPTORS
DUCATI MONSTER 950 (PLUS) 2021-**



This kit contains the items pictured and labelled over page.

Some parts may be shown for clarity of instructions only.

Do not proceed until you are sure all parts are present.

Please read all instructions before proceeding.

**IF IN ANY DOUBT WHEN FITTING OUR PRODUCTS, CONSULT ONE OF OUR DEALERS
OR HAVE FITTED BY A QUALIFIED TECHNICIAN.**

Please note that the way the kit is packed does not necessarily represent the way of mounting to the bike.

In the event of rubber washers being used to hold components onto bolts, these rubber washers can be thrown away.

DIGITAL COPIES OF THESE INSTRUCTIONS ARE AVAILABLE FROM

WWW.RG-RACING.COM

R&G

Unit 1, Shelley's Lane, East Worldham, Alton, Hampshire, GU34 3AQ

Tel: +44 (0)1420 89007 Fax: +44 (0)1420 87301 www.rg-racing.com Email: info@rg-racing.com



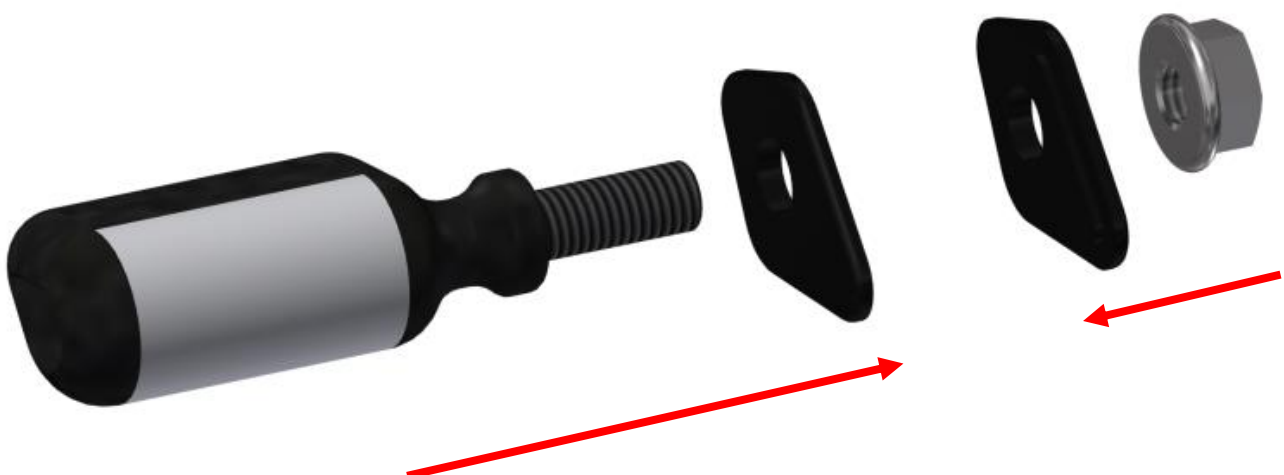
- Set of metric Allen keys to include 3, 4, 5 & 6mm
 - 13mm spanner or socket.
 - Small flat head screwdriver.

GENERAL TORQUE SETTINGS

M4 BOLT = 8Nm
 M5 BOLT = 12Nm
 M6 BOLT = 15Nm
 M8 BOLT = 20Nm
 M10 BOLT = 40Nm
 M12 BOLT = 40Nm

LEGEND

ITEM No.	DESCRIPTION	QTY
ITEM 1	I0071 - INDICATOR ADAPTOR INSERTS	4
ITEM 2	CON0015 MINI INDICATOR CONNECTORS	2
ITEM 3	IWC0002 - MINI INDICATOR WIRING COVERS	2
ITEM 4	666-896 - 150mm HEAT SHRINK	2

ASSEMBLY DIAGRAM

R&G

Unit 1, Shelley's Lane, East Worldham, Alton, Hampshire, GU34 3AQ

Tel: +44 (0)1420 89007 Fax: +44 (0)1420 87301 www.rg-racing.com Email: info@rg-racing.com



FITTING PICTURES



Picture 1



Picture 2



Picture 4

FITTING INSTRUCTIONS

- Begin by removing the 4 bolts shown in **Picture 1** with a 4mm Allen Key.
- This allows you to remove the plastic cover plate, exposing the license plate bracket mounting screws and wiring.
- Remove the rubber cable tie and disconnect the 2 indicator connectors shown in **Picture 2**.
- The plastic inserts can be used to reduce the opening in the license plate bracket, allowing an M8 indicator to be mounted.
- The wiring connectors can be used to connect R&G mini or aftermarket indicators with bullet connectors to the bike's indicator connections on the wiring loom.
- Ensure that the indicators flash correctly and that each side is connected to the correct terminals.

R&G

Unit 1, Shelley's Lane, East Worldham, Alton, Hampshire, GU34 3AQ

Tel: +44 (0)1420 89007 Fax: +44 (0)1420 87301 www.rg-racing.com Email: info@rg-racing.com



ISSUE 1 - 29/11/2021 - (WW)

CONSUMER NOTICE

The catalogue description and any exhibition of samples are only broad indications of the Products and R&G may make design changes which do not diminish their performance or visual appeal and supplying them in such state shall conform to the order. The Buyer acknowledges no representation or warranty (other than as to title) has been given or will apply to the Products other than those in R&G's order or confirmation and the Buyer confirms it has chosen the Products as being of merchantable quality and suitable for its particular purposes. Where R&G fits the Products or undertakes other services it shall exercise reasonable skill and care and rectify any fault free of charge unless the workmanship has been disturbed. The Buyer is responsible for ensuring that the warranty on the motorcycle is not affected by the fitting of the Products. On return of any defective Products R&G shall at its option either supply a replacement or refund the purchase money but shall not be liable if the Products have been modified or used or maintained otherwise than in accordance with R&G's or manufacturer's instructions and good engineering practice or if the defect arises from accident or neglect. Other than identified above and subject to R&G not limiting its liability for causing death and personal injury, it shall not be liable for indirect or consequential loss and otherwise its liability shall be limited to the amounts paid by the Buyer for the Products or the fitting or service concerned. These terms do not affect the Buyer's statutory rights.

R&G RACING RETURNS POLICY (NON-FAULTY GOODS)

Returns must be pre-authorized (if not pre-authorized the return will be rejected). Goods may only be returned direct to us if they were purchased direct from us (customer must prove if necessary). Otherwise to be returned to original vendor. Goods must be in re-sellable condition, in the opinion of R&G Racing. All returns are subject to a 25% restocking and handling fee (25% of the gross value exc. P&P – at the prevailing price at time of purchase). The customer must pay any and all carriage charges. No returns of discontinued products, unless within 14 days of purchase. This policy does not affect your statutory rights and does not refer to faulty goods.

R&G

Unit 1, Shelley's Lane, East Worldham, Alton, Hampshire, GU34 3AQ

Tel: +44 (0)1420 89007 Fax: +44 (0)1420 87301 www.rg-racing.com Email: info@rg-racing.com



NOTICE DE MONTAGE POUR RAP0025
ADAPTATEURS DE CLIGNOTANTS ARRIÈRE
DUCATI MONSTER 950 (PLUS) 2021-



CE KIT CONTIENT LES ARTICLES ILLUSTRÉS ET ÉTIQUETES SUR LA PAGE.

CERTAINES PARTIES PEUVENT ÊTRE PRÉSENTES UNIQUEMENT POUR LA CLARTÉ DES INSTRUCTIONS.
NE PAS PROCÉDER AU MONTAGE TANT QUE VOUS N'ÊTES PAS SÛR QUE TOUTES LES PIÈCES SOIENT
PRÉSENTES.

VEUILLEZ LIRE TOUTES LES INSTRUCTIONS AVANT DE CONTINUER.

**EN CAS DE DOUTE LORS DU MONTAGE DE NOS PRODUITS, CONSULTEZ UN DE NOS
REVENDEURS OU FAITES APPEL À UN TECHNICIEN QUALIFIÉ.**

VEUILLEZ NOTER QUE LA FAÇON DONT LE KIT EST EMBALLÉ NE REPRÉSENTE PAS NECESSAIREMENT LA
MANIÈRE DE LE MONTER SUR LA MOTO.

SI DES RONDELLES EN CAOUTCHOUC SONT UTILISÉES POUR MAINTENIR LES COMPOSANTS SUR LES
BOULONS, ELLES PEUVENT ÊTRE JETÉES.

NOTICE DISPONIBLE AU TÉLÉCHARGEMENT SUR :

WWW.RG-RACING.COM

R&G

Unit 1, Shelley's Lane, East Worldham, Alton, Hampshire, GU34 3AQ

Tel: +44 (0)1420 89007 Fax: +44 (0)1420 87301 www.rg-racing.com Email: info@rg-racing.com

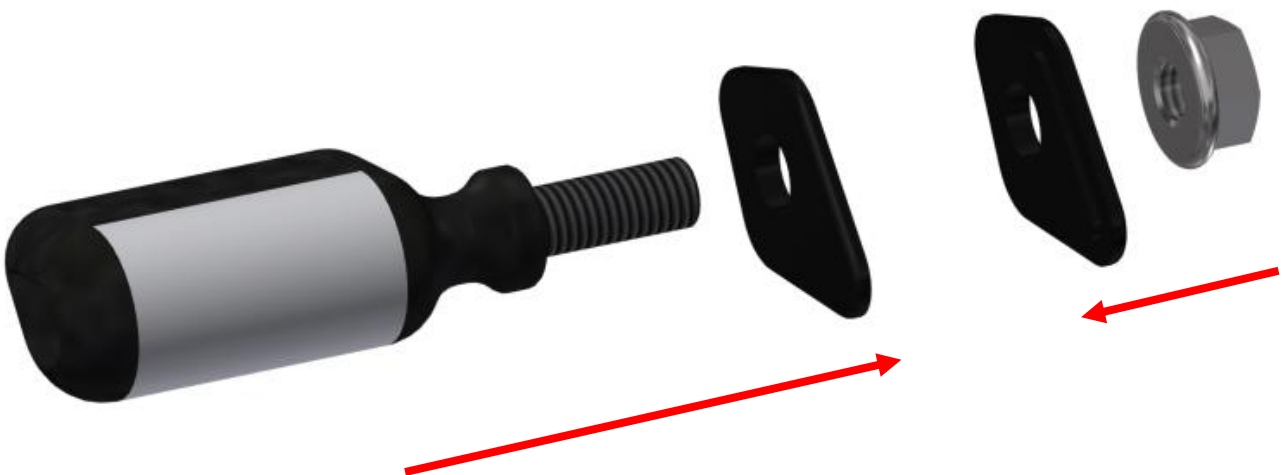


OUTILS REQUIS	VALEURS DE SERRAGE
<ul style="list-style-type: none"> • Clés Allen 3, 4, 5 & 6mm • Clé à molette 13mm. • Petit tournevis plat. 	M4 BOULON = 8Nm M5 BOULON = 12Nm M6 BOULON = 15Nm M8 BOULON = 20Nm M10 BOULON = 40Nm M12 BOULON = 40Nm

LEGENDE

ARTICLE No.	DESCRIPTION	QTÉ
ARTICLE 1	I0071 - INSERTS ADAPTATEURS DE CLIGNOTANTS	4
ARTICLE 2	CON0015 CONNECTEURS DE MINI CLIGNOTANTS	2
ARTICLE 3	IWC0002 - CAHCE FILS DE MINI CLIGNOTANTS	2
ARTICLE 4	666-896 - 150mm MANCHON THERMO RÉTRACTABLE	2

Schéma d'ensemble



R&G

Unit 1, Shelley's Lane, East Worldham, Alton, Hampshire, GU34 3AQ

Tel: +44 (0)1420 89007 Fax: +44 (0)1420 87301 www.rg-racing.com Email: info@rg-racing.com



PHOTOS DE MONTAGE



Photo 1



Photo 2



Photo 4

NOTICE DE MONTAGE

- Commencez par retirer les 4 boulons illustrés sur la photo 1 avec une clé Allen de 4mm.
- Cela vous permet de retirer la plaque de protection en plastique, exposant ainsi les vis de montage du support de plaque d'immatriculation et le câblage.
- Retirez le serre-câble en caoutchouc et débranchez les 2 connecteurs de clignotant illustrés sur la photo 2.
- Les inserts en plastique peuvent être utilisés pour réduire l'ouverture dans le support de plaque d'immatriculation, permettant le montage d'un clignotant M8.
- Les connecteurs de câblage peuvent être utilisés pour connecter des mini clignotants R&G ou de rechange avec des connecteurs, aux connexions des clignotants de la moto sur le faisceau de câbles.
- Assurez-vous que les clignotants clignotent correctement et que chaque côté soit connecté aux bonnes bornes

ISSUE 1 - 29/11/2021 - (WW)

R&G

Unit 1, Shelley's Lane, East Worldham, Alton, Hampshire, GU34 3AQ

Tel: +44 (0)1420 89007 Fax: +44 (0)1420 87301 www.rg-racing.com Email: info@rg-racing.com